

New South Wales Milk Production

21/22 by Region

(Million Litres)



		Inland/Central			North Coast			Southern			New South Wales		
		20/21	21/22	Var %	20/21	21/22	Var %	20/21	21/22	Var %	20/21	21/22	Var %
July		22.8	22.6	-1.0%	23.7	25.0	5.5%	44.2	44.8	1.4%	90.7	92.3	1.8%
	<i>YTD</i>	<i>22.8</i>	<i>22.6</i>	<i>-1.0%</i>	<i>23.7</i>	<i>25.0</i>	<i>5.5%</i>	<i>44.2</i>	<i>44.8</i>	<i>1.4%</i>	<i>90.7</i>	<i>92.3</i>	<i>1.8%</i>
August		23.2	22.7	-2.2%	25.4	27.4	7.8%	46.3	48.4	4.4%	94.9	98.4	3.7%
	<i>YTD</i>	<i>46.0</i>	<i>45.3</i>	<i>-1.6%</i>	<i>49.1</i>	<i>52.3</i>	<i>6.7%</i>	<i>90.5</i>	<i>93.2</i>	<i>2.9%</i>	<i>185.6</i>	<i>190.8</i>	<i>2.8%</i>
September		23.0			26.6			48.3			97.8		
	<i>YTD</i>	<i>69.0</i>			<i>75.7</i>			<i>138.8</i>			<i>283.4</i>		
October		23.3			27.2			51.0			101.4		
	<i>YTD</i>	<i>92.3</i>			<i>102.8</i>			<i>189.8</i>			<i>384.9</i>		
November		21.8			25.2			47.8			94.8		
	<i>YTD</i>	<i>114.1</i>			<i>128.0</i>			<i>237.6</i>			<i>479.7</i>		
December		21.5			23.7			46.8			91.9		
	<i>YTD</i>	<i>135.6</i>			<i>151.7</i>			<i>284.3</i>			<i>571.6</i>		
January		20.9			23.7			45.0			89.7		
	<i>YTD</i>	<i>156.5</i>			<i>175.4</i>			<i>329.4</i>			<i>661.3</i>		
February		18.5			20.3			39.5			78.3		
	<i>YTD</i>	<i>175.0</i>			<i>195.7</i>			<i>368.9</i>			<i>739.5</i>		
March		20.0			20.3			42.7			83.0		
	<i>YTD</i>	<i>195.0</i>			<i>216.0</i>			<i>411.5</i>			<i>822.6</i>		
April		20.0			18.5			42.2			80.7		
	<i>YTD</i>	<i>215.0</i>			<i>234.5</i>			<i>453.7</i>			<i>903.2</i>		
May		21.7			20.0			43.9			85.6		
	<i>YTD</i>	<i>236.7</i>			<i>254.5</i>			<i>497.6</i>			<i>988.8</i>		
June		22.0			21.0			43.7			86.6		
	<i>YTD</i>	<i>258.6</i>			<i>275.5</i>			<i>541.3</i>			<i>1,075.4</i>		
Total		258.6			275.5			541.3			1,075.4		

Produced by Trade and Strategy, Dairy Australia Limited, Source: Dairy Manufacturers

Please Note: These reports contain data based on a combination of voluntary direct reporting from processors, and data sourced from government agencies. Retrospective adjustments are possible if new or revised data is received.

Milk production report (Litres '000s)

New South Wales

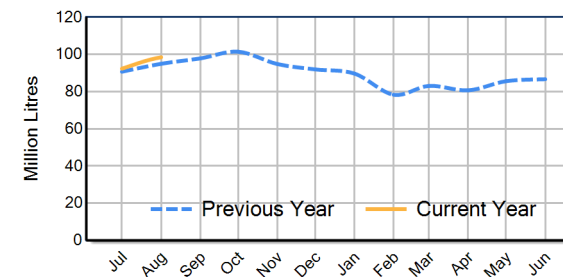


		Inland/Central	North Coast	Southern	NSW
Month	August-19	21,589	26,115	47,071	94,775
	August-20	23,221	25,382	46,338	94,941
	August-21	22,712	27,359	48,377	98,449
	% change	-2.2%	7.8%	4.4%	3.7%
Region Share	August-20	24.5%	26.7%	48.8%	100.0%
	August-21	23.1%	27.8%	49.1%	100.0%
Year To Date		Inland/Central	North Coast	Southern	NSW
	2019/2020	42,615	49,544	91,008	183,167
	2020/2021	46,015	49,066	90,523	185,604
	2021/2022	45,275	52,343	93,164	190,782
	% change	-1.6%	6.7%	2.9%	2.8%
Region Share	2020/2021	24.8%	26.4%	48.8%	100.0%
	2021/2022	23.7%	27.4%	48.8%	100.0%
Total		Inland/Central	North Coast	Southern	NSW
	2020/2021	258,630	275,533	541,282	1,075,444
	Region Share	24.0%	25.6%	50.3%	100.0%

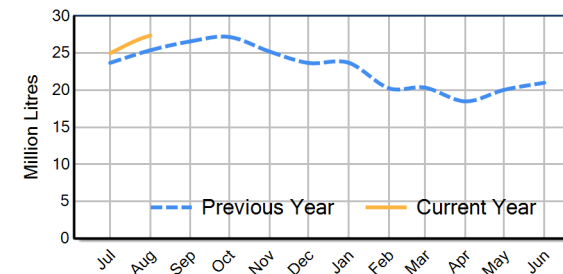
Average Milkfat & Protein (%)

		Inland/Central	North Coast	Southern	NSW
Milkfat	August-19	3.73%	3.99%	3.87%	3.87%
	August-20	3.79%	4.05%	4.03%	3.97%
	August-21	4.04%	4.03%	4.06%	4.04%
	% change 21/22	6.4%	-0.4%	0.8%	1.8%
Protein		Inland/Central	North Coast	Southern	NSW
	August-19	3.32%	3.42%	3.40%	3.38%
	August-20	3.30%	3.45%	3.42%	3.40%
	August-21	3.35%	3.40%	3.43%	3.40%
	% change 21/22	1.7%	-1.5%	0.2%	0.1%

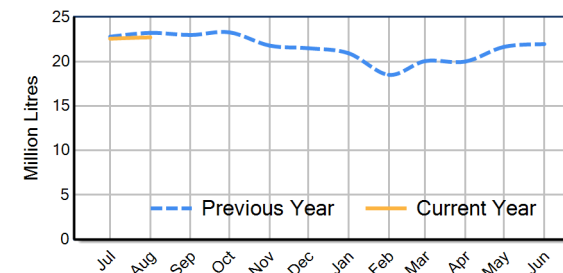
NSW Milk Production - Total Regions



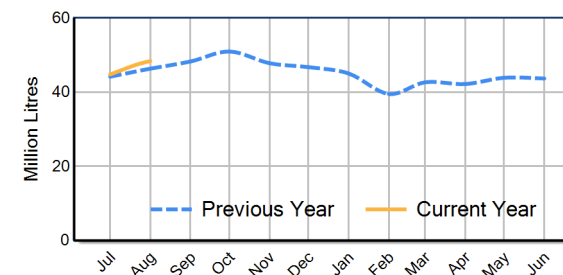
NSW Milk Production - North Coast Region



NSW Milk Production - Inland/Central Region



NSW Milk Production - Southern Region



Please note: These reports contain data based on a combination of voluntary direct reporting from processors, and data sourced from government agencies. Retrospective adjustments are possible if new or revised data is received.