

Victoria Milk Production

20/21 by Region

(Million Litres)



		Eastern			Northern			Western			Victoria		
		19/20	20/21	Var %	19/20	20/21	Var %	19/20	20/21	Var %	19/20	20/21	Var %
July		114.9	120.2	4.6%	118.7	124.2	4.6%	172.8	177.7	2.9%	406.3	422.1	3.9%
	YTD	114.9	120.2	4.6%	118.7	124.2	4.6%	172.8	177.7	2.9%	406.3	422.1	3.9%
August		152.9	156.5	2.3%	132.9	133.9	0.8%	187.1	193.2	3.2%	472.9	483.6	2.3%
	YTD	267.8	276.7	3.3%	251.5	258.1	2.6%	359.9	370.9	3.1%	879.2	905.7	3.0%
September		203.7	207.4	1.8%	161.7	162.2	0.3%	198.8	205.9	3.6%	564.2	575.4	2.0%
	YTD	471.5	484.1	2.7%	413.3	420.3	1.7%	558.7	576.8	3.2%	1,443.4	1,481.1	2.6%
October		239.6	235.8	-1.6%	177.6	174.3	-1.8%	218.4	217.9	-0.2%	635.5	628.0	-1.2%
	YTD	711.1	719.9	1.2%	590.8	594.6	0.6%	777.0	794.7	2.3%	2,078.9	2,109.1	1.5%
November		222.2	218.7	-1.6%	161.8	162.8	0.7%	203.9	201.6	-1.1%	587.9	583.1	-0.8%
	YTD	933.3	938.6	0.6%	752.6	757.4	0.6%	980.9	996.3	1.6%	2,666.8	2,692.3	1.0%
December		212.6	205.0	-3.6%	153.2	155.6	1.6%	187.2	183.1	-2.2%	553.1	543.7	-1.7%
	YTD	1,145.9	1,143.6	-0.2%	905.8	913.0	0.8%	1,168.1	1,179.4	1.0%	3,219.8	3,236.0	0.5%
January		178.9	179.6	0.4%	135.0	139.6	3.4%	146.0	155.4	6.4%	459.9	474.6	3.2%
	YTD	1,324.8	1,323.2	-0.1%	1,040.8	1,052.6	1.1%	1,314.2	1,334.7	1.6%	3,679.8	3,710.6	0.8%
February		148.3	141.1	-4.8%	107.4	109.5	1.9%	115.5	121.0	4.7%	371.2	371.6	0.1%
	YTD	1,473.2	1,464.4	-0.6%	1,148.2	1,162.1	1.2%	1,429.7	1,455.7	1.8%	4,051.0	4,082.2	0.8%
March		150.3	139.7	-7.0%	114.2	113.6	-0.5%	113.0	113.3	0.2%	377.5	366.6	-2.9%
	YTD	1,623.4	1,604.1	-1.2%	1,262.4	1,275.7	1.1%	1,542.7	1,569.0	1.7%	4,428.5	4,448.8	0.5%
April		142.7	140.3	-1.6%	125.7	124.7	-0.8%	106.9	109.1	2.0%	375.3	374.1	-0.3%
	YTD	1,766.1	1,744.4	-1.2%	1,388.1	1,400.4	0.9%	1,649.6	1,678.1	1.7%	4,803.8	4,822.9	0.4%
May		143.5	143.2	-0.2%	133.4	140.9	5.7%	132.4	136.5	3.1%	409.2	420.7	2.8%
	YTD	1,909.6	1,887.7	-1.1%	1,521.5	1,541.3	1.3%	1,782.0	1,814.6	1.8%	5,213.0	5,243.6	0.6%
June		125.2	117.0	-6.5%	129.3	129.1	-0.1%	157.3	156.9	-0.2%	411.7	403.0	-2.1%
	YTD	2,034.8	2,004.7	-1.5%	1,650.7	1,670.4	1.2%	1,939.2	1,971.5	1.7%	5,624.8	5,646.6	0.4%
Total		2,034.8	2,004.7		1,650.7	1,670.4		1,939.2	1,971.5		5,624.8	5,646.6	

Produced by Trade and Strategy, Dairy Australia Limited, Source: Dairy Manufacturers

Please Note: These reports contain data based on a combination of voluntary direct reporting from processors, and data sourced from government agencies. Retrospective adjustments are possible if new or revised data is received.

Milk production report (Litres '000s)

Victoria

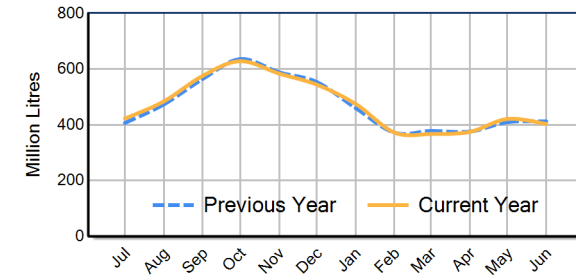


		Eastern	Northern	Western	VIC
Month	June-19	104,091	120,020	155,526	379,637
	June-20	125,207	129,250	157,273	411,730
	June-21	117,038	129,058	156,881	402,976
	% change	-6.5%	-0.1%	-0.2%	-2.1%
Region Share	June-20	30.4%	31.4%	38.2%	100.0%
	June-21	29.0%	32.0%	38.9%	100.0%
Year To Date		Eastern	Northern	Western	VIC
	2018/2019	1,875,123	1,688,071	2,012,360	5,575,554
	2019/2020	2,034,842	1,650,707	1,939,223	5,624,772
	2020/2021	2,004,728	1,670,368	1,971,485	5,646,582
	% change	-1.5%	1.2%	1.7%	0.4%
Region Share	2019/2020	36.2%	29.3%	34.5%	100.0%
	2020/2021	35.5%	29.6%	34.9%	100.0%
Total		Eastern	Northern	Western	VIC
	2019/2020	2,034,842	1,650,707	1,939,223	5,624,772
	Region Share	36.2%	29.3%	34.5%	100.0%

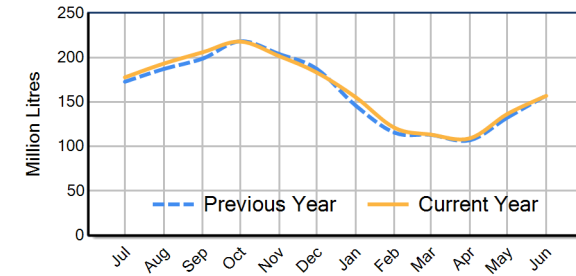
Average Milkfat & Protein (%)

		Eastern	Northern	Western	VIC
Milkfat	June-19	4.36%	4.20%	4.16%	4.23%
	June-20	4.41%	4.31%	4.24%	4.31%
	June-21	4.41%	4.37%	4.28%	4.35%
	% change 20/21	0.0%	1.6%	1.0%	0.8%
Protein		Eastern	Northern	Western	VIC
	June-19	3.50%	3.48%	3.38%	3.45%
	June-20	3.59%	3.56%	3.44%	3.52%
	June-21	3.55%	3.48%	3.40%	3.47%
	% change 20/21	-1.0%	-2.1%	-1.1%	-1.5%

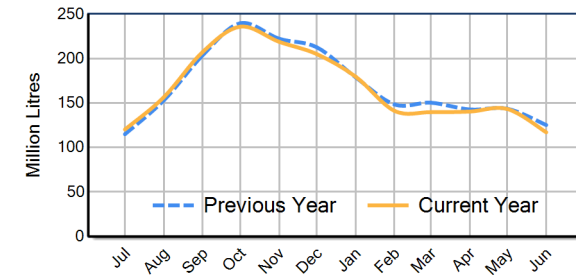
VIC Milk Production - Total Regions



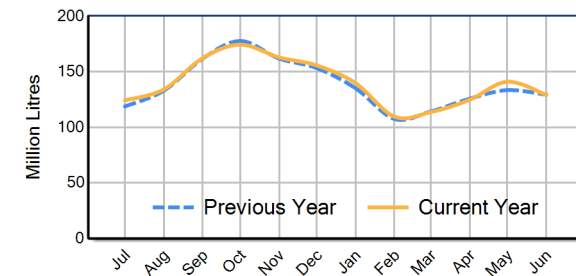
VIC Milk Production - Western Region



VIC Milk Production - Eastern Region



VIC Milk Production - Northern Region



Please note: These reports contain data based on a combination of voluntary direct reporting from processors, and data sourced from government agencies. Retrospective adjustments are possible if new or revised data is received.